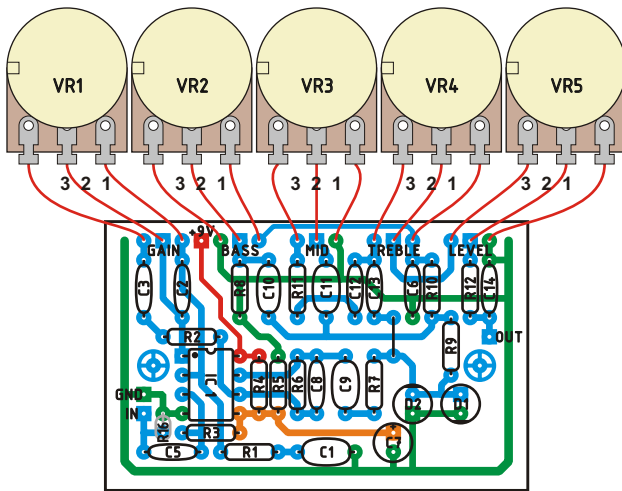
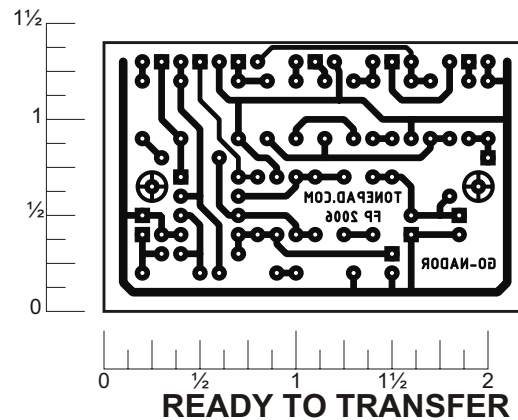


Build the Marshall Guv'nor, based on the schematic by Michael Burgundy. The circuit has been modified for true bypass switching. Trademarks remain property of their owners.



LAYOUT



## Parts List

### Resistors

R1 - 2k2 (2.2k)  
R2 - 10k  
R3 - 1M  
R4 - 47k  
R5 - 47k  
R6 - 680k  
R7 - 1k  
R8 - 680 ohm  
R9 - 1k5 (1.5k)  
R10 - 680 ohm  
R11 - 100 ohm  
R12 - 22k  
R16 - 2M2 (2.2M)

### Potentiometers

VR1 - 100kB  
VR2 - 10kA  
VR3 - 10kA  
VR4 - 10kA  
VR5 - 100kB

### Capacitors

C1 - 0.1μF  
C2 - 120pF  
C3 - 0.068μF  
C5 - 0.01μF  
C6 - 0.068μF  
C7 - 10μF  
C8 - 220pF  
C9 - 0.22μF  
C10 - 0.1μF  
C11 - 0.22μF  
C12 - 0.01μF  
C13 - 0.004μF  
C14 - 470pF

### IC's/Diodes

IC1 - TL072  
D1 - Red LED  
D2 - Red LED

## Schematic

